

QuickGuide

QuickTox Kit for Melamine

2.5 ppm

Test Procedure *(have strips and Buffer ready at room temperature)*



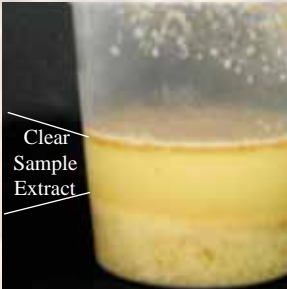
1. Add 25 gram sub-sample to container



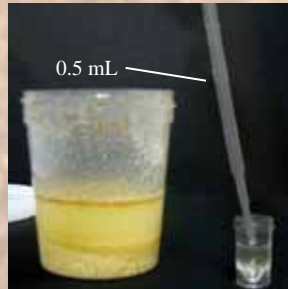
2. Add 50 mL Extraction Buffer



3. Shake 1 minute



4. Allow to settle into two layers, or filter - clear sample extract is used



5. With the pipette, add 0.5 mL sample extract to vial



6. Add a test strip, wait 5 minutes, and read the result

Test Interpretation

Positive Result

Test Line is **lighter** than the Control Line

Sample contains 2.5 ppm or more

Negative Result

Test Line is **equal to or slightly darker** than the Control Line

Sample contains **less than 2.5 ppm**

